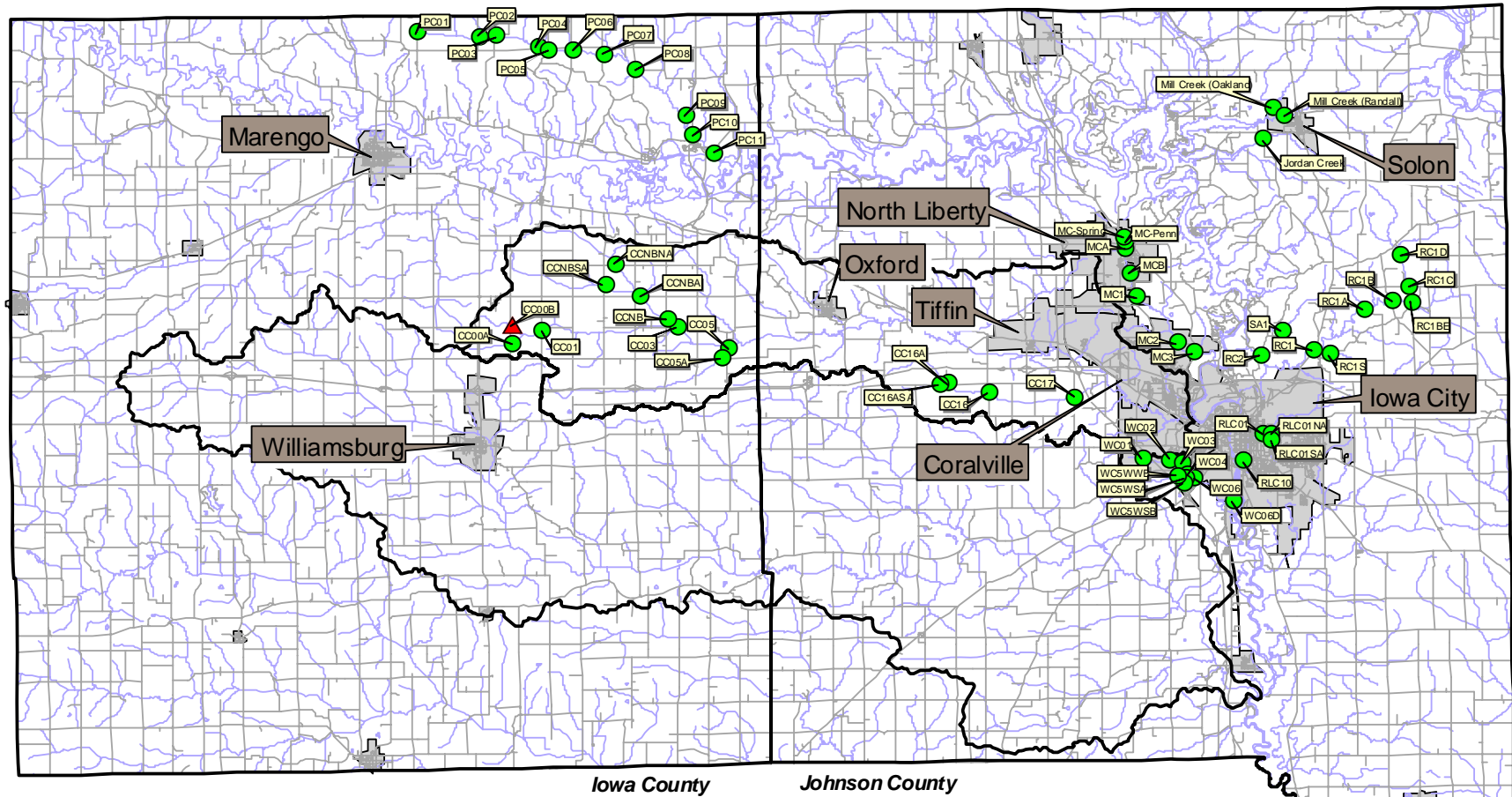


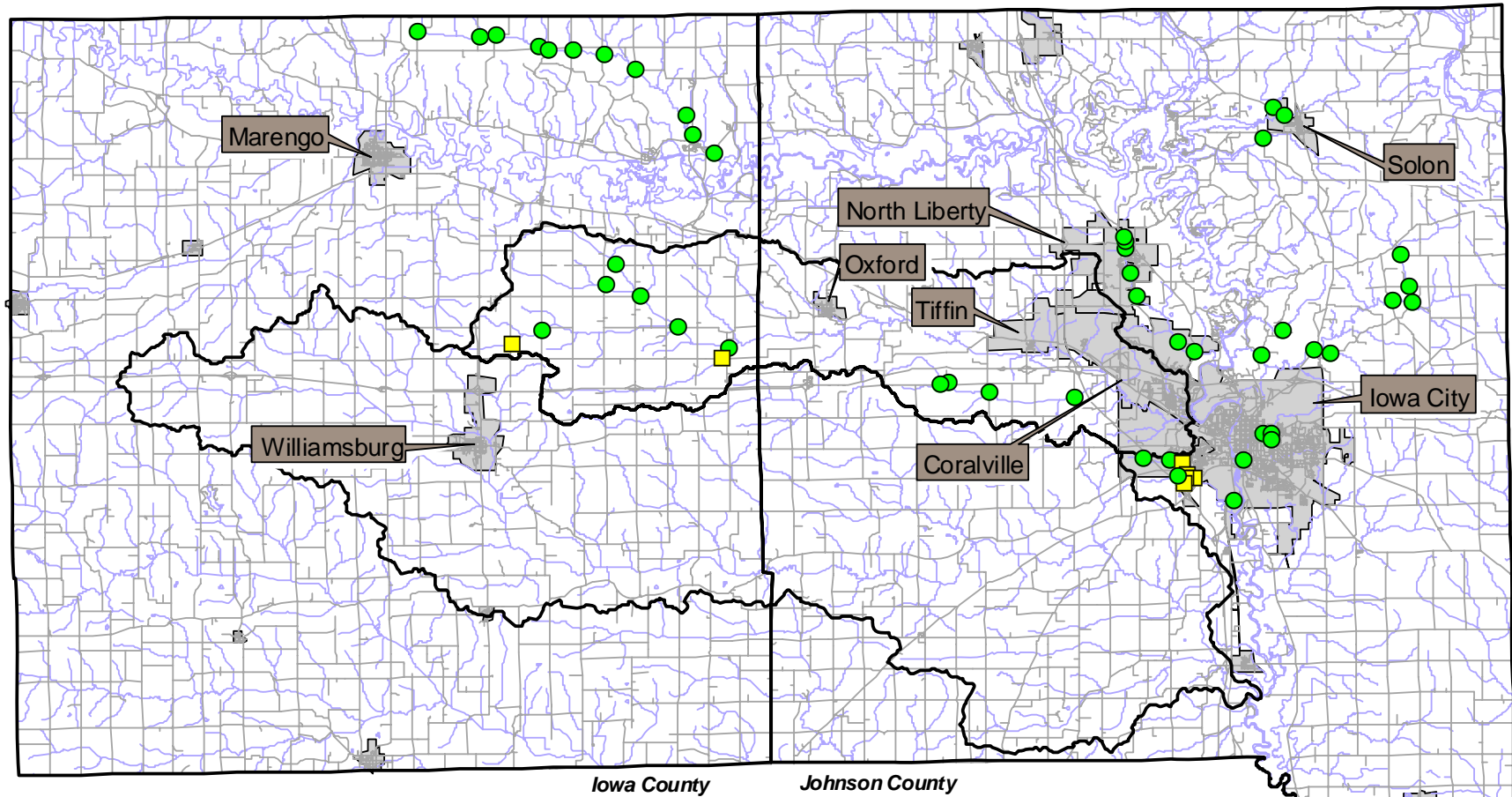
# Johnson/Iowa County Snapshot -- July 12, 2008 Results



- Snapshot Sites**
- ▲ Not Sampled
  - Sampled
  - ▭ Old Mans and Clear Creek Watersheds
  - Roads
  - ~ Streams
  - Cities



# Johnson/Iowa County Snapshot -- July 12, 2008 Results



IOWATER Chloride (mg/L)

● <33

■ 33 - 53

▭ Old Mans and Clear Creek Watersheds

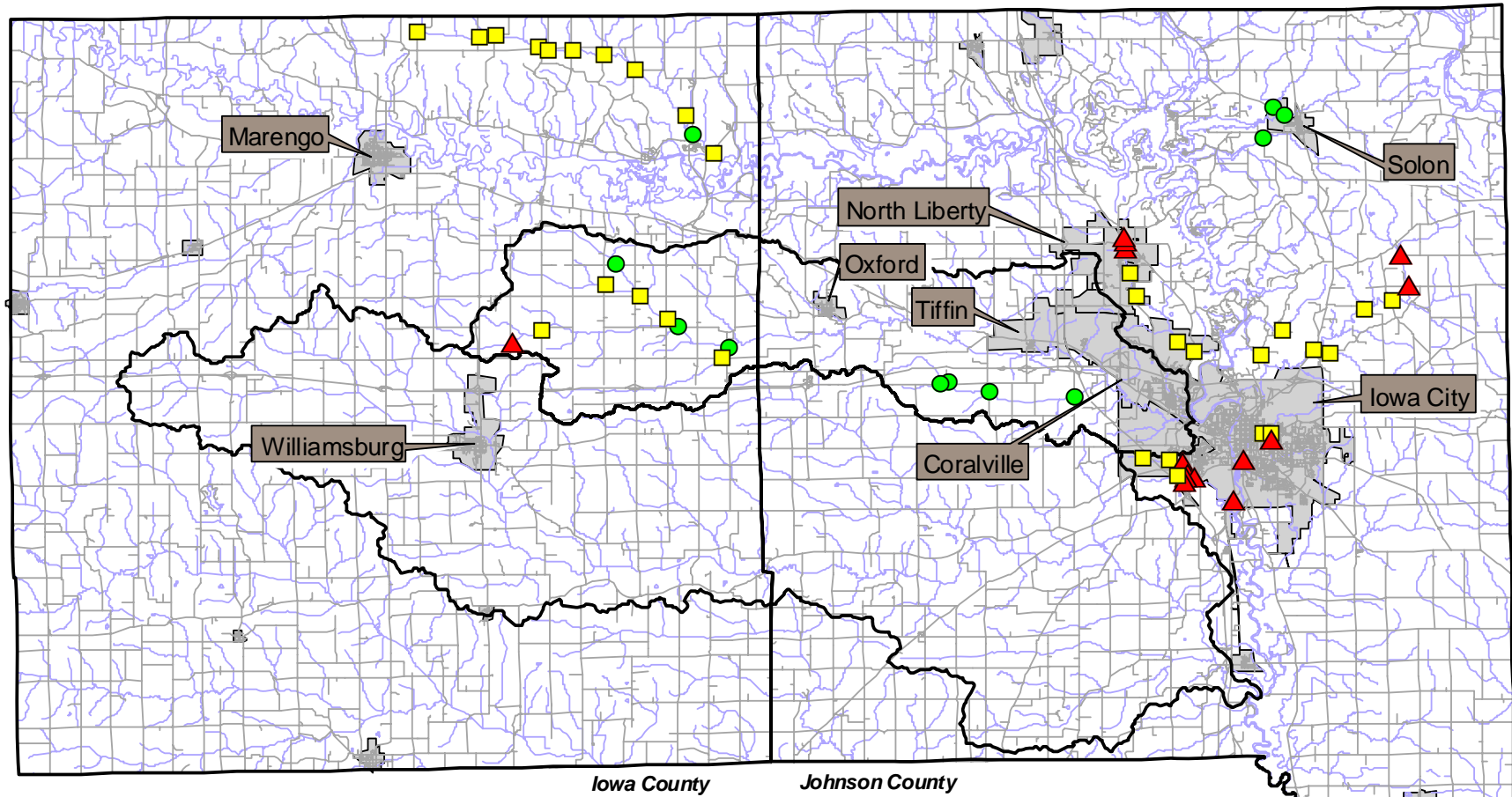
▬ Roads

▬ Streams

▭ Cities



# Johnson/Iowa County Snapshot -- July 12, 2008 Results



IOWATER Dissolved Oxygen (mg/L)

▲ 4-5

■ 6

● 8

▭ Old Mans and Clear Creek Watersheds

▬ Roads

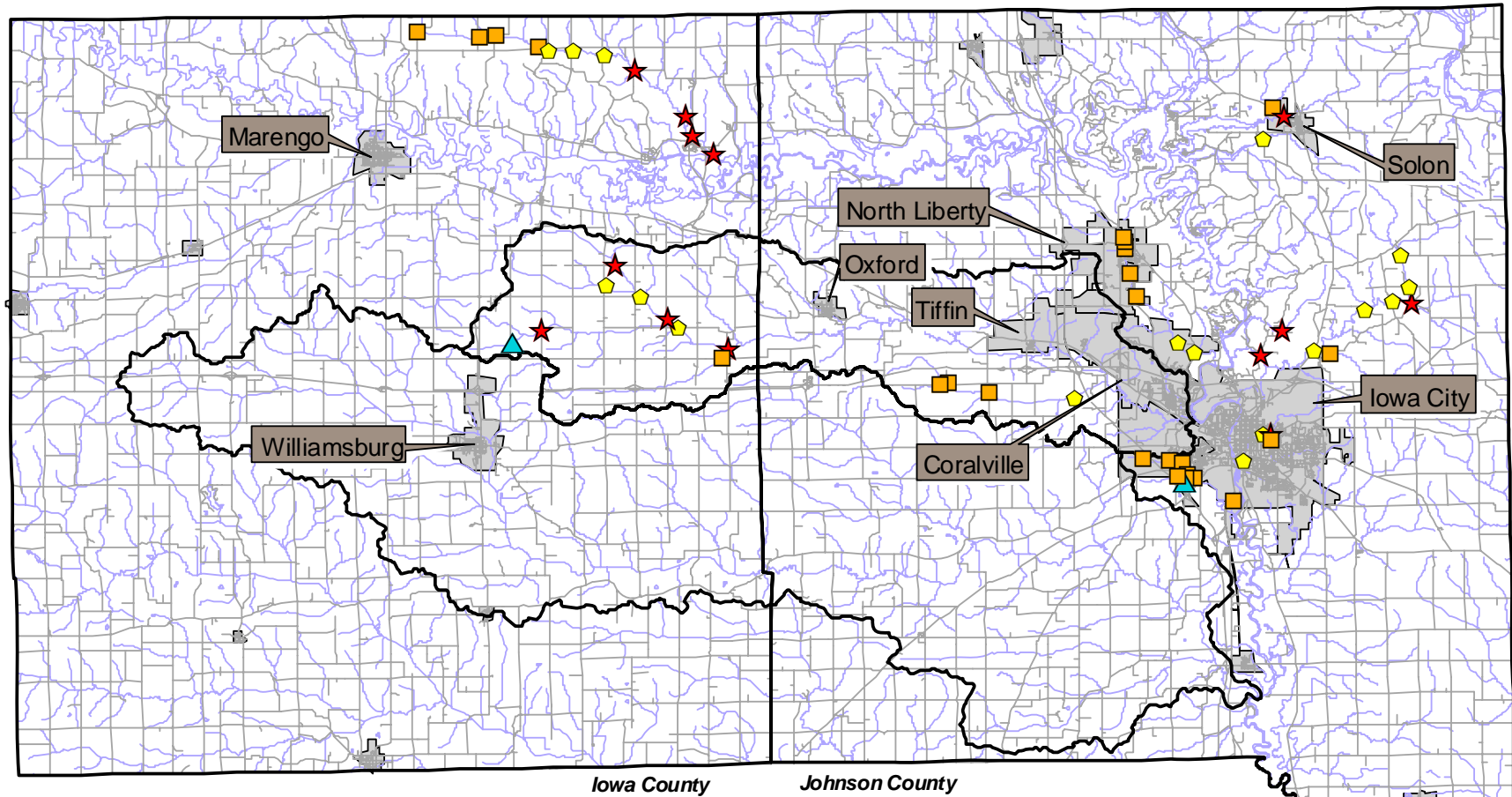
▬ Streams

▭ Cities

5 0 5 Miles



# Johnson/Iowa County Snapshot -- July 12, 2008 Results



Lab E. coli Bacteria (MPN/100 ml)

● <235

▲ 235 - 1000

■ 1001 - 10000

⬠ 10001 - 25000

★ 25001 - 82000

▭ Old Mans and Clear Creek Watersheds

▬ Roads

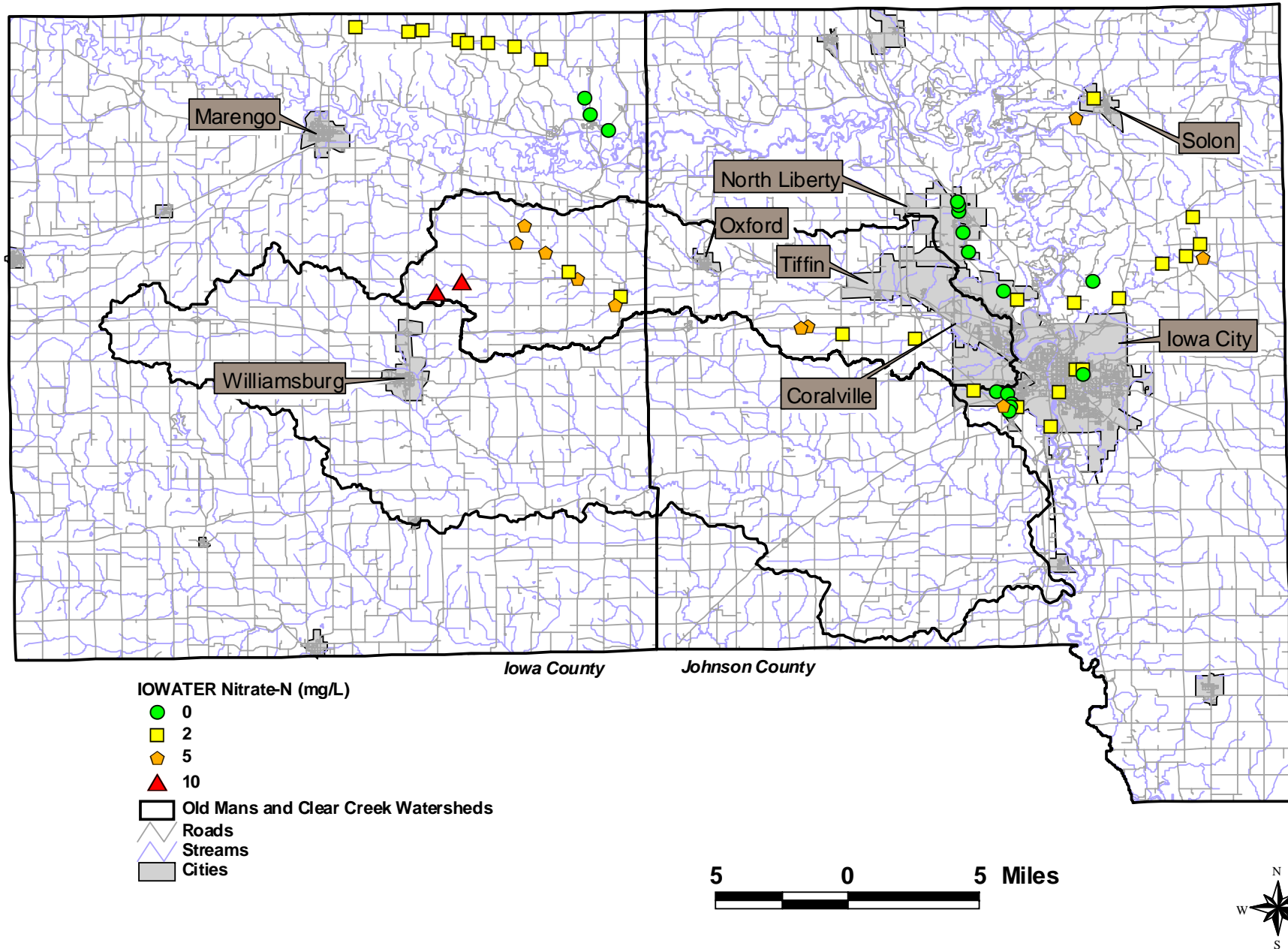
⬜ Streams

▭ Cities

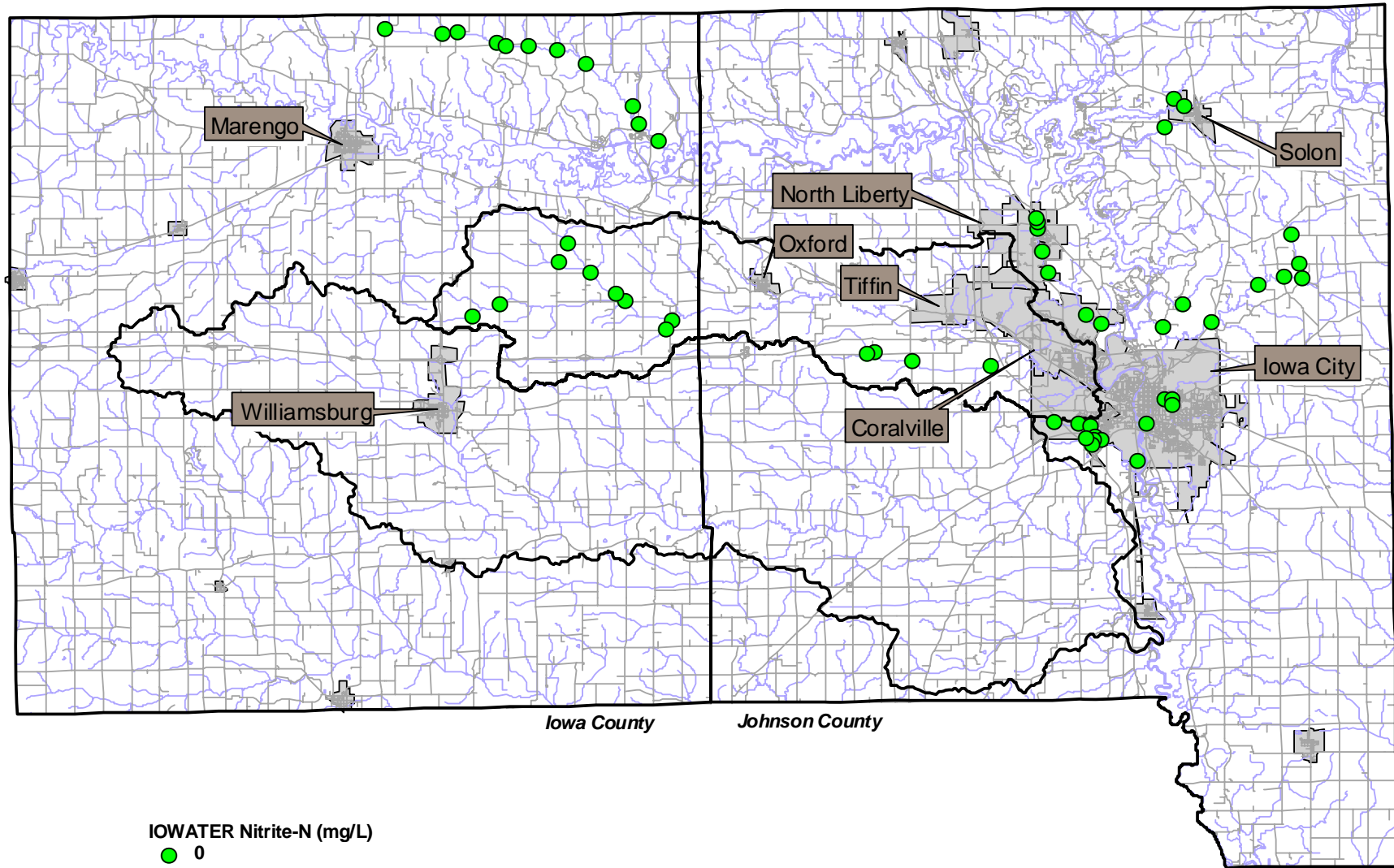
5 0 5 Miles



# Johnson/Iowa County Snapshot -- July 12, 2008 Results



# Johnson/Iowa County Snapshot -- July 12, 2008 Results



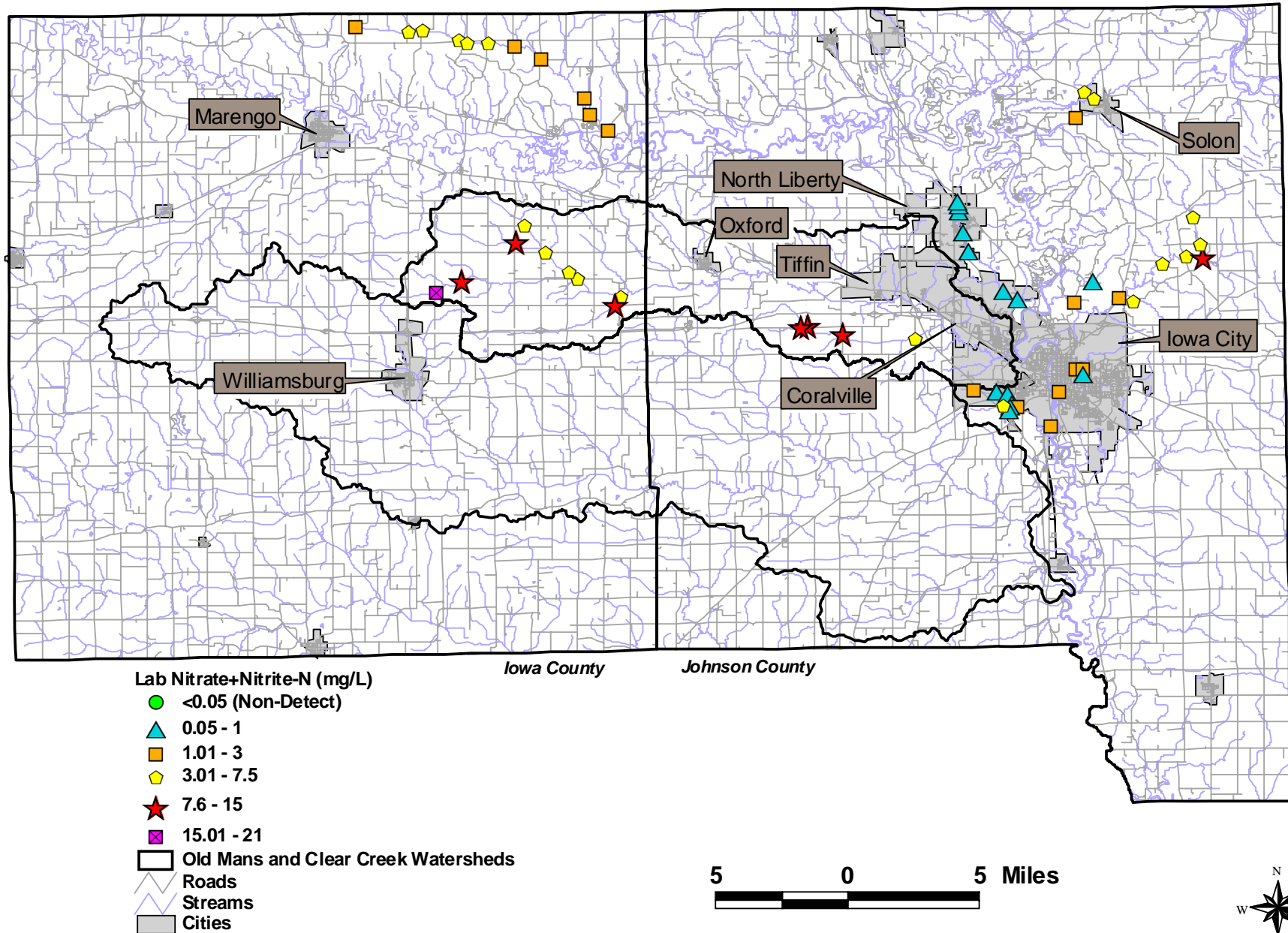
IOWATER Nitrite-N (mg/L)

- 0
- ▭ Old Mans and Clear Creek Watersheds
- ▭ Roads
- ▭ Streams
- ▭ Cities

5 0 5 Miles

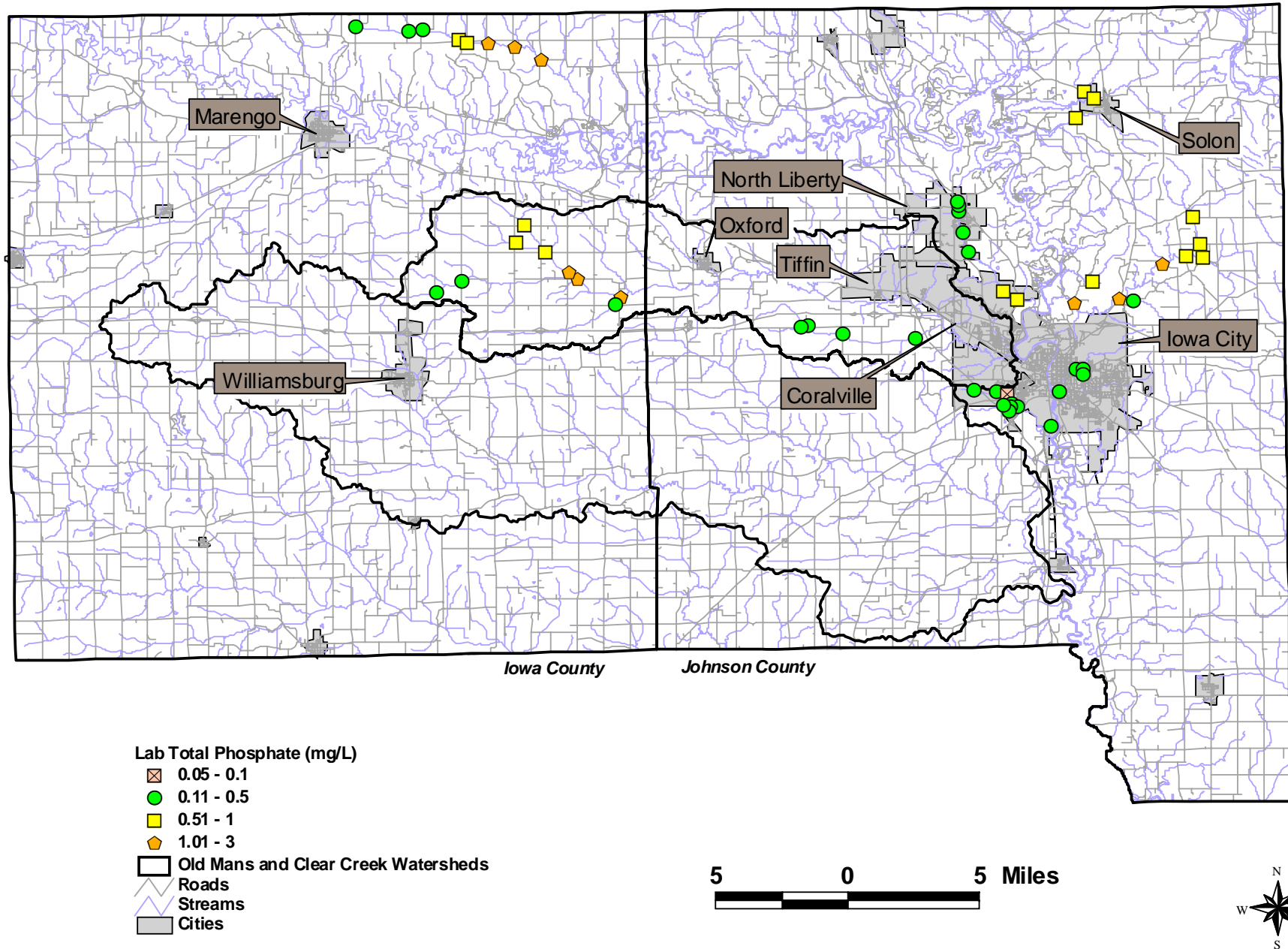


# Johnson/Iowa County Snapshot -- July 12, 2008 Results

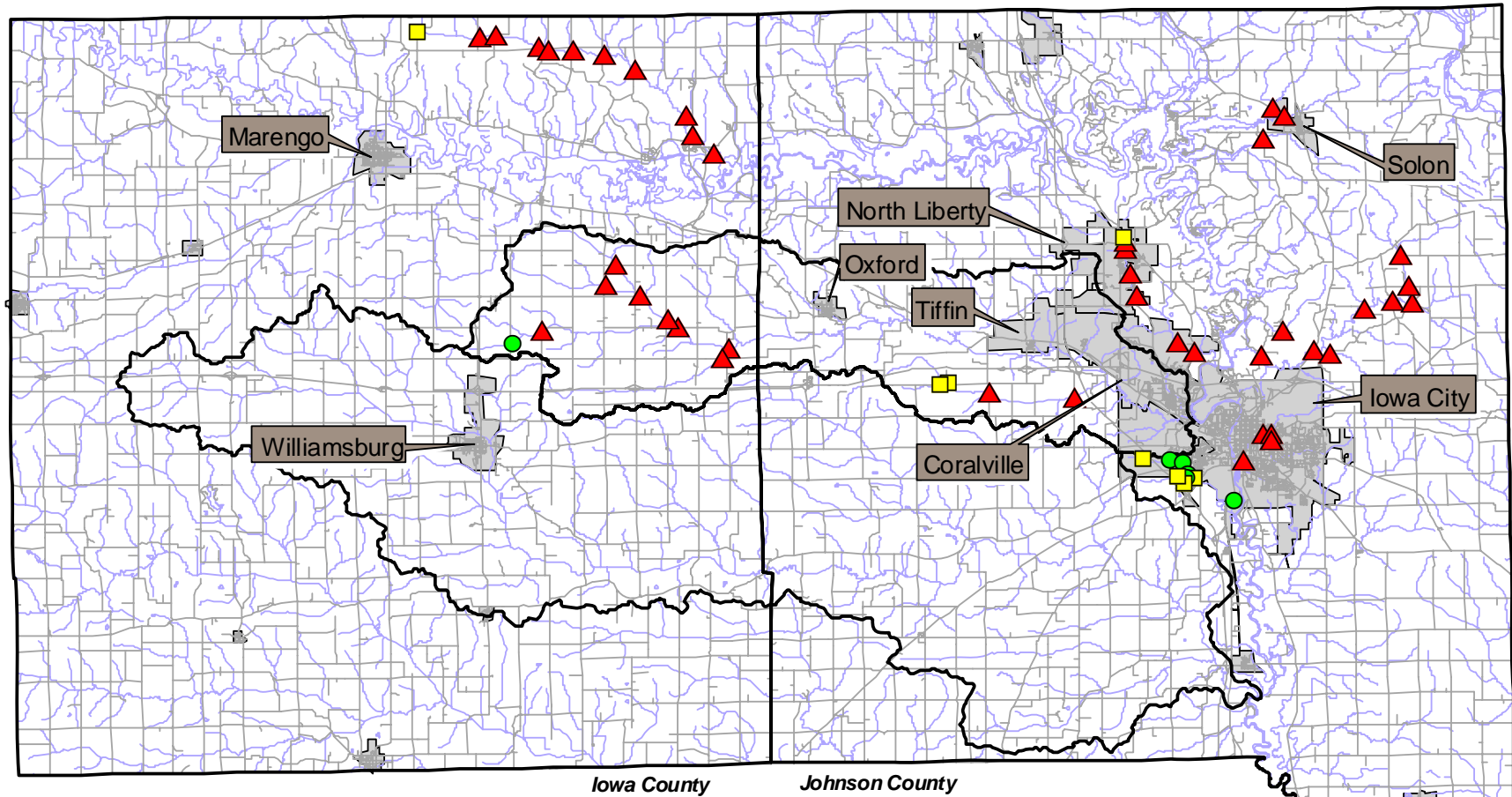




# Johnson/Iowa County Snapshot -- July 12, 2008 Results



# Johnson/Iowa County Snapshot -- July 12, 2008 Results



IOWATER Transparency (cm)

▲ <20

■ 20 - 40

● >40

▭ Old Mans and Clear Creek Watersheds

▬ Roads

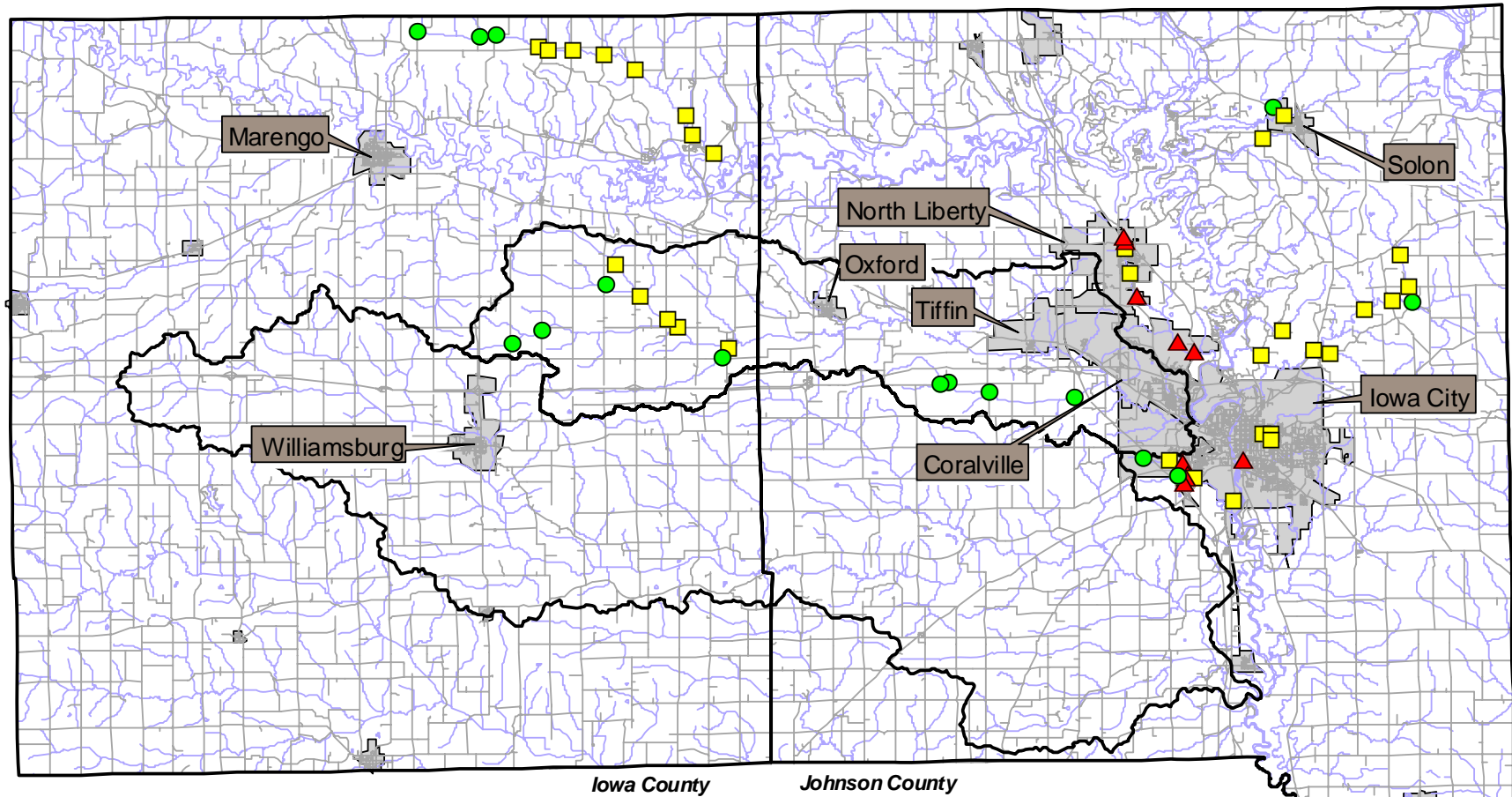
▬ Streams

▭ Cities

5 0 5 Miles



# Johnson/Iowa County Snapshot -- July 12, 2008 Results



IOWATER Water Temperature (degrees F)

● 60 - 65

■ 66 - 70

▲ 71 - 75

▭ Old Mans and Clear Creek Watersheds

⚡ Roads

⚡ Streams

■ Cities

5 0 5 Miles

