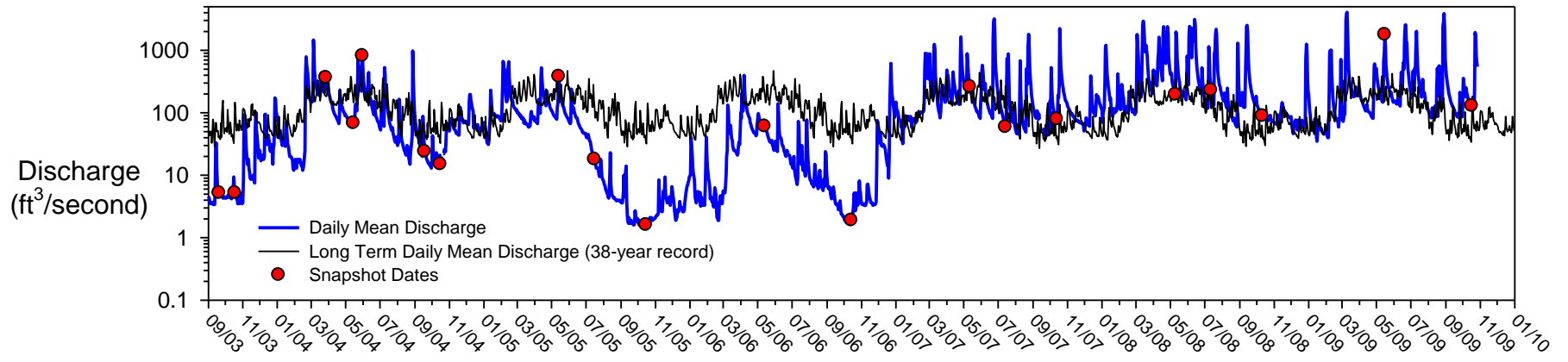


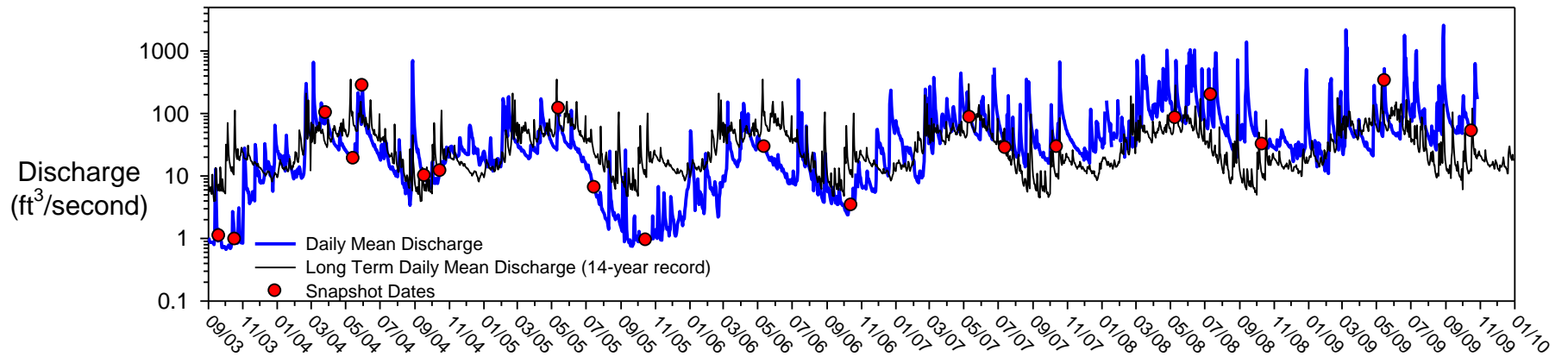
Table 1. Discharge the day of each snapshot for the three gaging stations in the snapshot area.

U.S.G.S. Gaging Station	Old Mans Creek (38-year record)		Clear Creek at Oxford (14-year record)		Clear Creek at Coralville (56-year record)	
	Discharge (cubic feet per second)	Discharge as a percentage of long-term daily mean discharge for given day	Discharge (cubic feet per second)	Discharge as a percentage of long-term daily mean discharge for given day	Discharge (cubic feet per second)	Discharge as a percentage of long-term daily mean discharge for given day
September 20, 2003	5.2	12%	1.1	17%	6.4	10%
October 18, 2003	5.2	4%	0.97	<1%	5.1	9%
March 27, 2004	364	198%	102	319%	190	218%
May 15, 2004	68	47%	19	28%	37	38%
May 31, 2004	816	347%	279	343%	358	407%
September 18, 2004	24	47%	10	172%	28	41%
October 16, 2004	15	46%	12	114%	16	63%
May 14, 2005	380	213%	120	159%	139	108%
July 16, 2005	18	14%	6.5	29%	10	16%
October 15, 2005	1.6	5%	0.94	9%	2.9	11%
May 13, 2006	60	33%	29	21%	40	34%
October 14, 2006	1.9	5%	3.4	32%	5.4	19%
May 12, 2007	216	111%	86	104%	117	130%
July 14, 2007	59	22%	28	112%	41	32%
October 13, 2007	79	188%	29	264%	54	208%
May 10, 2008	195	55%	84	30%	90	58%
July 12, 2008	229	194%	198	360%	390	549%
October 11, 2008	89	178%	32	327%	53	183%
May 16, 2009	1780	1148%	333	505%	640	610%
October 17, 2009	129	179%	52	111%	64	149%

Old Mans Creek near Sharon Center (Johnson Co.)



Clear Creek near Oxford (Johnson Co.)



Clear Creek in Coralville (Johnson Co.)

